



**NAVIGATION LED LIGHT**  
DESIGNED FOR SAFETY

**KEEPING YOU  
AND YOUR  
VESSEL SAFER**







TANKOA S501 VERTIGE  
PHOTO CREDIT: **BLUEI PRODUCTIONS**

# INDEX

|                           |    |
|---------------------------|----|
| MATERIAL                  | 8  |
| DOUBLE LIGHTS             | 10 |
| COMBINED LIGHTS           | 12 |
| READY AND EASY TO INSTALL | 14 |
| LIGHT ALARM               | 16 |
| ALL IN ONE                | 18 |
| SECURITY SYSTEM           | 20 |
| TEST                      | 22 |
| CERTIFICATION             | 24 |

## **DATA SHEET**

|               |    |
|---------------|----|
| DOUBLE LIGHTS | 26 |
| SINGLE LIGHTS | 40 |
| ACCESSORIES   | 52 |

# MATERIAL

## **ACCURATE DESIGN**

The harmonious shape of our navigation light, modern and classic at the same time, make it perfect for the highest quality yachting market.

## **VISIBLE QUALITY**

The navigation light is designed to work under the extreme conditions typical of Marine Environment.

## **THREE FINISHES**

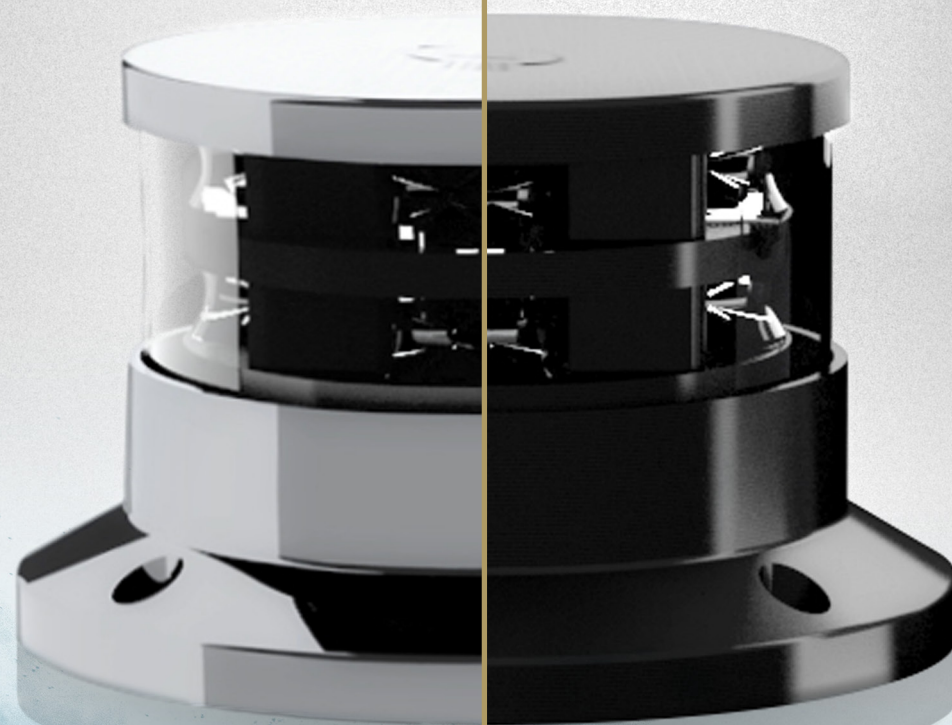
Polished Stainless Steel

Black Aluminium

Grey Aluminium

## **DURABLE**

The highest quality standards are guaranteed by a double check of the manufacturing and testing processes.



**STAINLESS STEEL**

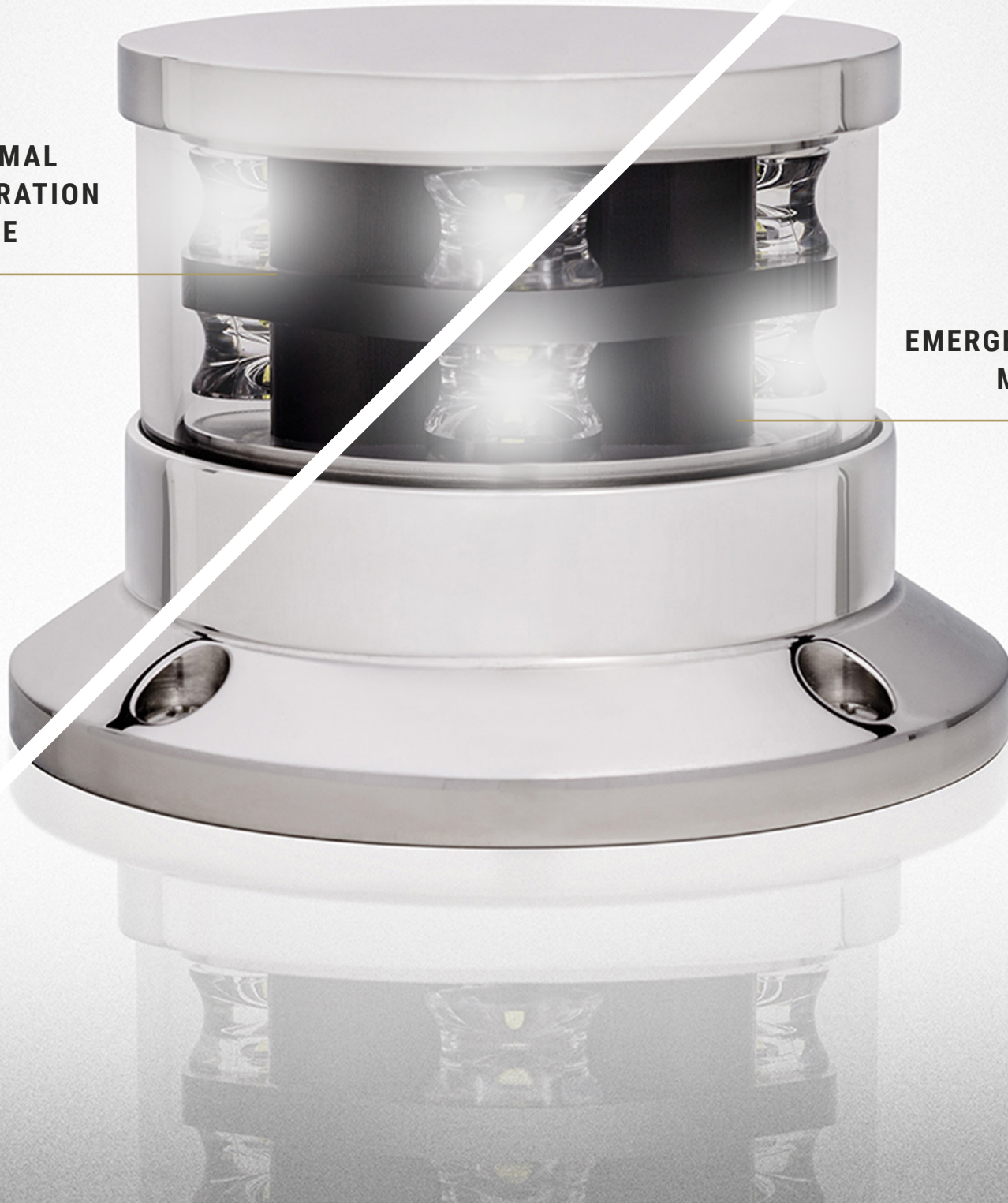
AISI 316L Polished and  
passivated stainless steel

**ALUMINIUM**

Anodized ANTICORODAL 6082 black  
or grey aluminum

**NORMAL  
OPERATION  
MODE**

**EMERGENCY  
MODE**





# DOUBLE LIGHTS

Our navigation led lights are composed of two integrated lights in one. In fact, they also have emergency lighting inside.

# COMBINED LIGHTS

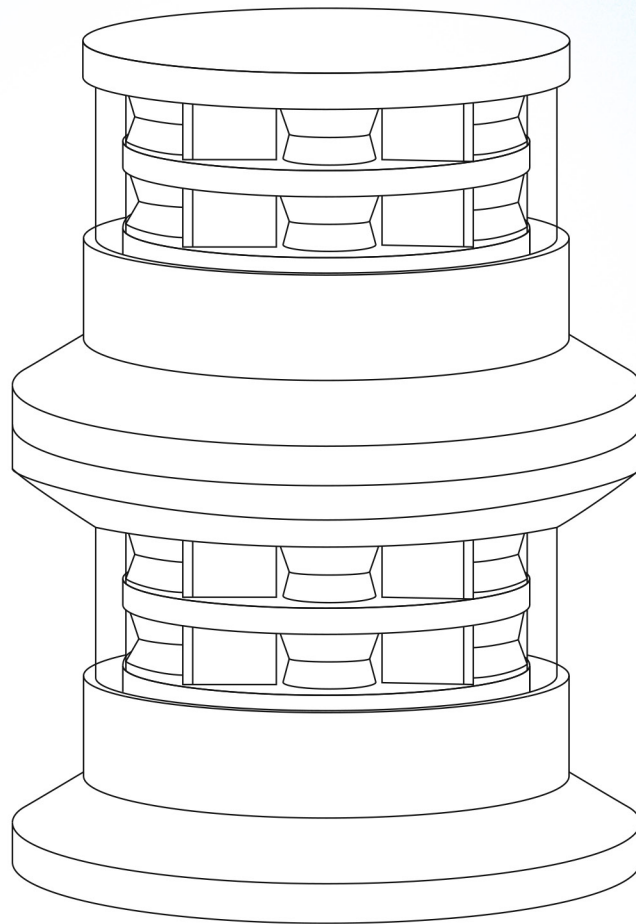
All 4C Navigation Led Lights can be combined. This feature can be useful to put together a masthead with an anchor or any combination needed.

To date, n.4 360° RED lights were needed to compensate the shadowing of the mast and implement a NUC light signal.

Now is possible to submit a new configuration to the inspector of the register:

N. 1 360° + N.2 180° RED IN A VERTICAL LINE "WHERE THEY CAN BEST BE SEEN", AS RULE 27 SAYS.

**THIS REDUCES COSTS AND EYES IMPACT FOR THE MAST**



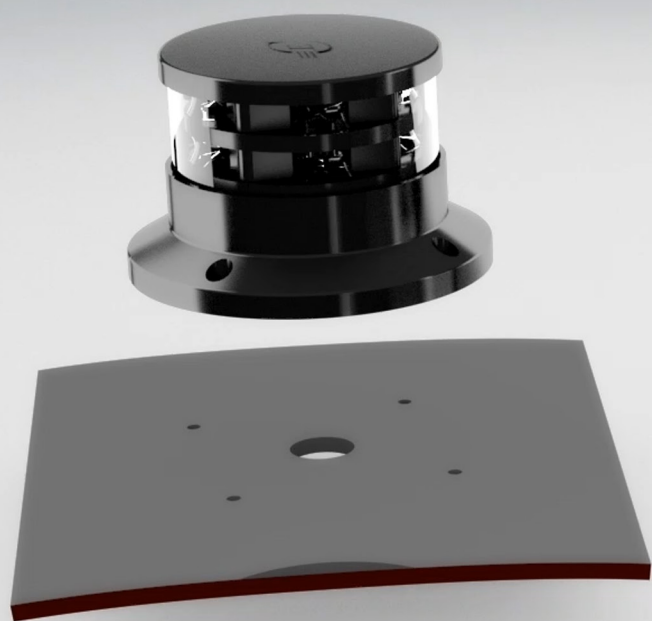
**BLACK ALUMINIUM**  
Dimensions: Ø 110mm · H 167mm



**WHITE ALUMINIUM**  
Dimensions: Ø 110mm · H 167mm



**STAINLESS ALUMINIUM**  
Dimensions: Ø 110mm · H 167mm



**WITHOUT  
BRACKET**



**DECK  
BRACKET**



**SIDE  
BRACKET**

# READY AND EASY TO INSTALL

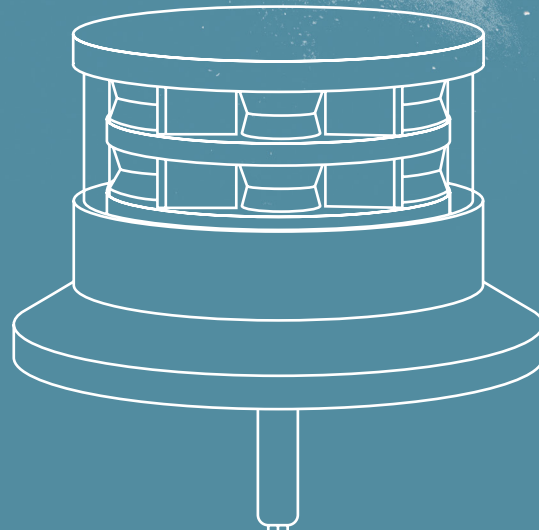
This lights can be installed directly on the deck or with different types of bracket that can be selected as accessory or customizable for any need.

# LIGHT ALARM

A true innovation. Electronics is built in and no additional devices are needed to control it. The lights do a continuous self diagnosis of its status to send all info of working or fault to the control panel.

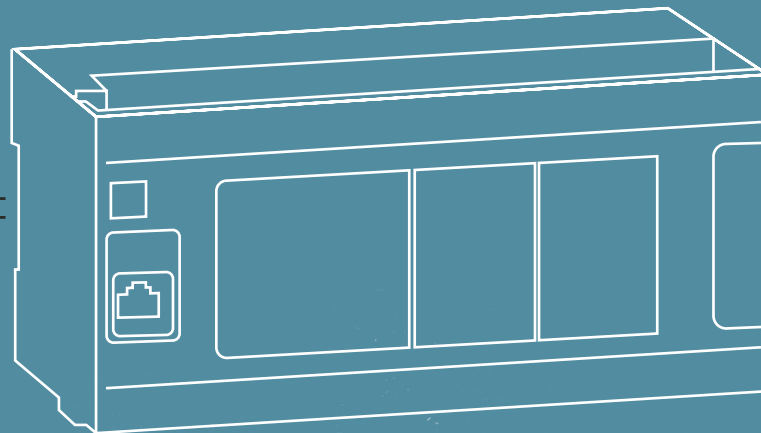
## MAIN FEATURES:

- **SELF-DIAGNOSTIC CAPABILITIES OF THE LIGHT**
- **LESS TECHNICAL SPACE IN ELECTRICAL PANELS**  
than the systems currently in use.
- **EASY INSTALLATION**  
Wires have only to reach control board to collect all functions/alarm available.



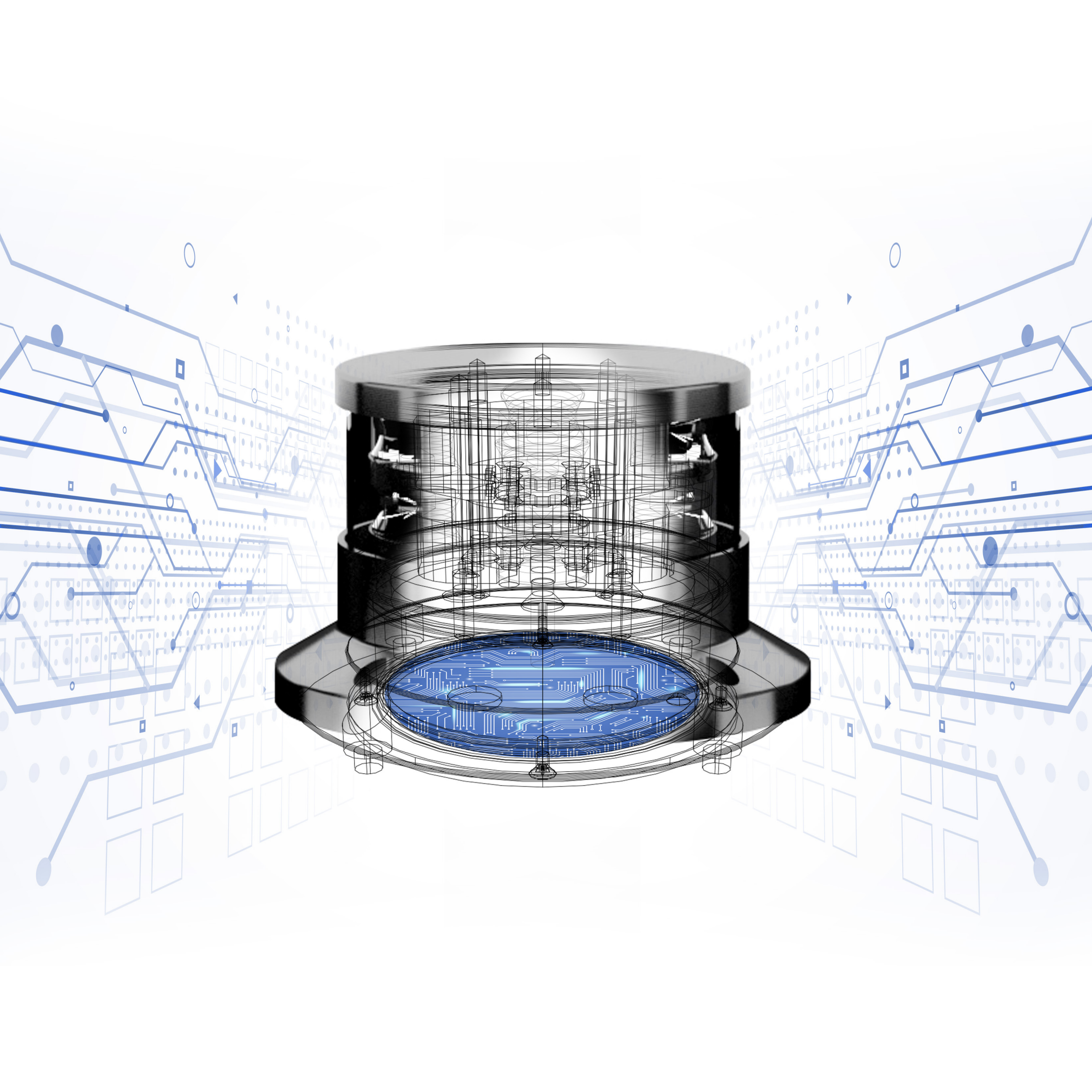
+ -  
24 VDC  
POWER S.

MIMIC  
PANEL  
MONITORING  
SYSTEM



PLC

**DEDICATED  
CABLE FOR SELF  
DIAGNOSTIC  
FEEDBACK**  
24 V - > well working  
0 V - > fault





# ALL IN ONE

## **A TRUE INNOVATION**

4C Innovation's Navigation Led lights do not require additional devices for lights control and alarm, because electronics is embedded inside the light. On board is only needed a system to manage the alarm generated by the light itself. This is a true innovation, because all the systems present in the market, try to control the state of the lights by devices installed in the switchboard. With 4C Innovation navigation led lights, you can reduce the time of installation and the wiring inside the switchboard.

## **MAIN FEATURE:**

- SELF-DIAGNOSTIC CAPABILITIES OF THE LIGHT
- LESS TECHNICAL SPACE IN ELECTRICAL PANELS
- EASY INSTALLATION

# SECURITY SYSTEM

### **SECURITY IN NIGHT NAVIGATION**

Thanks to the experience gained by the Cantalupi Group over the years of activity in the electrical system, in on-board systems and the use of LED, it was possible for the Research and Development division to create a new system capable of ensuring safety on navigation lights.

4C Innovation Navigation Led Lights are able to send an alarm in two particular cases:

- When there is a short circuit;
- When the Led loses brightness without shutting down.

Usually with LED lights, it is not possible to make a current control, for the same reason:

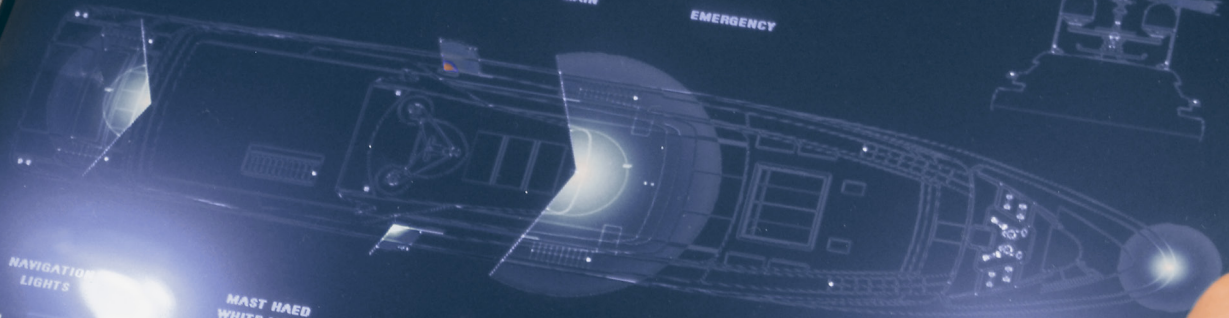
- LED can be in short circuit;
- LED may deteriorate without shutting down; this does not guarantee the brightness required by COLREGs certification.



CONTROL MODE



POWER SUPPLY



NAVIGATION LIGHTS



MAST HAED WHITE LIGHT

NORMAL

RED LIGHT

BACKUP

GREEN LIGHT

BACKUP

STERN LIGHT

NORMAL

N-U-C- LIGHT N°1

BACKUP

N-U-C- LIGHT N°2

BACKUP

N-U-C- LIGHT N°3

BACKUP

BOW WHITE LIGHT

BACKUP

NAVIGATION LIGHTS

22:55

01/03/12

SET UP





# TEST

All 4c lights are submitted to a series of tests and checks before the delivery.

We test:

- Water resistance with IP56 and IP68 tests.
- Thermal shock
- Test led
- Electronic test

All tests are performed with procedures uni ISO 9001:2015.

# CERTIFICATION

4C Innovation Navigation Lights are certified with MED CERTIFICATION for vessels over 50m.

In addition, the navigation light control system inside the light is certified.

**EMC** (Electromagnetic Compatibility)

**EMI** (Electromagnetic Interference)

**IR** (Insulation Resistance)

**IP68** (International Protection degree)

**ELECTROMAGNETIC COMPATIBILITY TEST**

**ENVIRONMENTAL TEST REPORT**





STERNLICHT - CE MLD 01 BA  
3000 - 12V - 20W



NEE 1550130









# DOUBLE LIGHTS

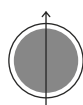
## DATA SHEET

|                      |    |
|----------------------|----|
| 360° GREEN LIGHT     | 28 |
| 360° RED LIGHT       | 29 |
| TOWING LIGHT         | 30 |
| STERN LIGHT WHITE    | 31 |
| MASTHEAD LIGHT (6NM) | 32 |
| MASTHEAD LIGHT (6NM) | 33 |
| MASTHEAD LIGHT (5NM) | 34 |
| STARBOARD LIGHT      | 35 |
| PORT LIGHT           | 36 |
| 180° RED LIGHT       | 37 |
| ANCHOR LIGHT         | 38 |
| 360° AMBER LIGHT     | 39 |

## DATA SHEET DOUBLE LIGHTS



360°



## ANCHOR LIGHT

FOR MOTOR YACHT AND SAILING VESSEL OVER 50mt

VISIBILITY [NM]: >3

POWER [W]: 6.5

Possibility to be combined

Accessories on page 52

### TECHNICAL FEATURES

Dimensions

Ø: 110mm | h: 75mm

Operating voltage

24 VDC

(Range of operating voltage: 18÷32 VDC)

Current on leds

Constant in the range of Operating Voltage

Overcurrent protection

>2A

Protection level

IP68

Materials available

**Aluminum:** anodized ANTICORODAL 6082

**Steel:** passivated and polished stainless steel AISI 316L

Optical window

Transparent Borosilicate Glass

### ORDER CODE



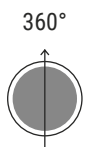
**ALUMINIUM GREY**  
code: CE NL D 06 GA



**ALUMINIUM BLACK**  
code: CE NL D 06 BA



**STAINLESS STEEL**  
code: CE NL D 06 SS



## 360° RED LIGHT

**FOR MOTOR YACHT AND SAILING VESSEL OVER 50mt**

VISIBILITY [NM]: >3

POWER [W]: 11

Possibility to be combined

Accessories on page 52

### TECHNICAL FEATURES

Dimensions

Ø: 110mm | h: 75mm

Operating voltage

24 VDC

(Range of operating voltage: 18-32 VDC)

Current on leds

Constant in the range of Operating Voltage

Overcurrent protection

>2A

Protection level

IP68

Materials available

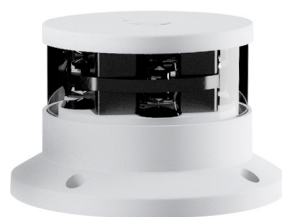
**Aluminum:** anodized ANTICORODAL 6082

**Steel:** passivated and polished stainless steel AISI 316L

Optical window

Transparent Borosilicate Glass

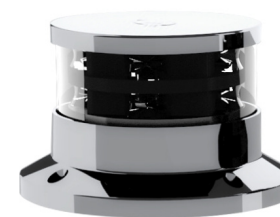
### ORDER CODE



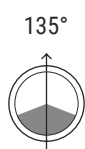
**ALUMINIUM GREY**  
code: CE NL D 07 GA



**ALUMINIUM BLACK**  
code: CE NL D 07 BA



**STAINLESS STEEL**  
code: CE NL D 07 SS



## TOWING LIGHT

FOR MOTOR YACHT AND SAILING VESSEL OVER 50mt

VISIBILITY [NM]: >3

POWER [W]: 6.5

Possibility to be combined

Accessories on page 52

### TECHNICAL FEATURES

Dimensions

Ø: 110mm | h: 75mm

Operating voltage

24 VDC

(Range of operating voltage: 18÷32 VDC)

Current on leds

Constant in the range of Operating Voltage

Overcurrent protection

>2A

Protection level

IP68

Materials available

**Aluminum:** anodized ANTICORODAL 6082

**Steel:** passivated and polished stainless steel AISI 316L

Optical window

Transparent Borosilicate Glass

### ORDER CODE



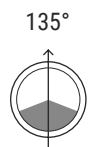
**ALUMINIUM GREY**  
code: CE NL D 02 GA



**ALUMINIUM BLACK**  
code: CE NL D 02 BA



**STAINLESS STEEL**  
code: CE NL D 02 SS



## STERN LIGHT WHITE

FOR MOTOR YACHT AND SAILING VESSEL OVER 50mt

VISIBILITY [NM]: >3

POWER [W]: 5.5

Possibility to be combined

Accessories on page 52

### TECHNICAL FEATURES

|                        |   |
|------------------------|---|
| Dimensions             | Ø: 110mm   h: 75mm  |
| Operating voltage      | 24 VDC<br>(Range of operating voltage: 18=32 VDC)   |
| Current on leds        | Constant in the range of Operating Voltage  |
| Overcurrent protection | >2A   |
| Protection level       | IP68  |
| Materials available    | <b>Aluminum:</b> anodized ANTICORODAL 6082<br><b>Steel:</b> passivated and polished stainless steel AISI 316L |
| Optical window         | Transparent Borosilicate Glass  |

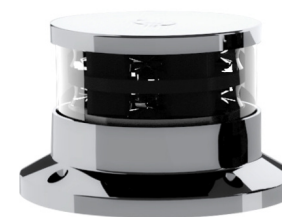
### ORDER CODE



**ALUMINIUM GREY**  
code: CE NL D 01 GA



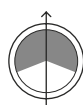
**ALUMINIUM BLACK**  
code: CE NL D 01 BA



**STAINLESS STEEL**  
code: CE NL D 01 SS



225°



## MASTHEAD LIGHT (5NM)

FOR MOTOR YACHT AND SAILING VESSEL OVER 50mt

VISIBILITY [NM]: >5

POWER [W]: 15

Possibility to be combined

Accessories on page 52

### TECHNICAL FEATURES

Dimensions

Ø: 110mm | h: 75mm

Operating voltage

24 VDC

(Range of operating voltage: 18÷32 VDC)

Current on leds

Constant in the range of Operating Voltage

Overcurrent protection

>2A

Protection level

IP68

Materials available

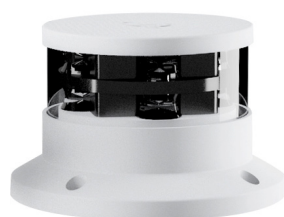
**Aluminum:** anodized ANTICORODAL 6082

**Steel:** passivated and polished stainless steel AISI 316L

Optical window

Transparent Borosilicate Glass

### ORDER CODE



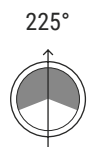
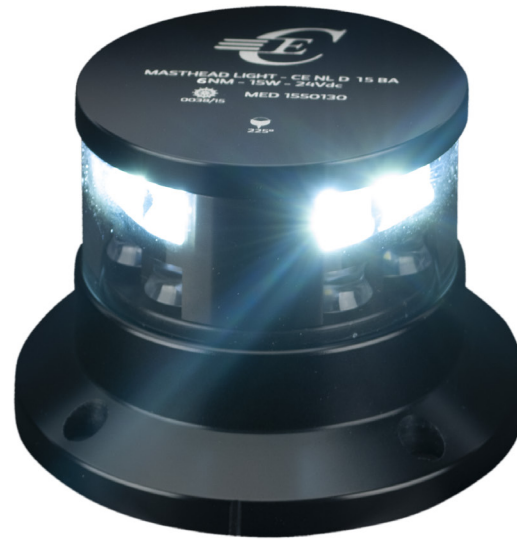
**ALUMINIUM GREY**  
code: CE NL D 05 GA



**ALUMINIUM BLACK**  
code: CE NL D 05 BA



**STAINLESS STEEL**  
code: CE NL D 05 SS



## MASTHEAD LIGHT (6NM)

FOR MOTOR YACHT AND SAILING VESSEL OVER 50mt

VISIBILITY [NM]: >6

POWER [W]: 15

Possibility to be combined

Accessories on page 52

### TECHNICAL FEATURES

|                        |   |
|------------------------|---|
| Dimensions             | Ø: 110mm   h: 75mm  |
| Operating voltage      | 24 VDC<br>(Range of operating voltage: 18=32 VDC)   |
| Current on leds        | Constant in the range of Operating Voltage  |
| Overcurrent protection | >2A   |
| Protection level       | IP68  |
| Materials available    | <b>Aluminum:</b> anodized ANTICORODAL 6082<br><b>Steel:</b> passivated and polished stainless steel AISI 316L |
| Optical window         | Transparent Borosilicate Glass  |

### ORDER CODE



**ALUMINIUM GREY**  
code: CE NL D 15 GA



**ALUMINIUM BLACK**  
code: CE NL D 15 BA



**STAINLESS STEEL**  
code: CE NL D 15 SS

## DATA SHEET DOUBLE LIGHTS



112,5°



## PORT LIGHT

FOR MOTOR YACHT AND SAILING VESSEL OVER 50mt

VISIBILITY [NM]: >3

POWER [W]: 8

Possibility to be combined

Accessories on page 52

### TECHNICAL FEATURES

Dimensions

Ø: 110mm | h: 75mm

Operating voltage

24 VDC

(Range of operating voltage: 18÷32 VDC)

Current on leds

Constant in the range of Operating Voltage

Overcurrent protection

>2A

Protection level

IP68

Materials available

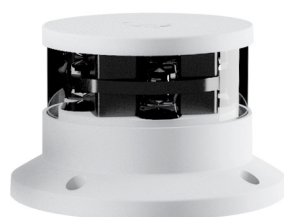
**Aluminum:** anodized ANTICORODAL 6082

**Steel:** passivated and polished stainless steel AISI 316L

Optical window

Transparent Borosilicate Glass

### ORDER CODE



**ALUMINIUM GREY**  
code: CE NL D 04 GA



**ALUMINIUM BLACK**  
code: CE NL D 04 BA



**STAINLESS STEEL**  
code: CE NL D 04 SS





112,5°



## STARBOARD LIGHT

FOR MOTOR YACHT AND SAILING VESSEL OVER 50mt

VISIBILITY [NM]: >3

POWER [W]: 8

Possibility to be combined

Accessories on page 52

### TECHNICAL FEATURES

Dimensions

Ø: 110mm | h: 75mm

Operating voltage

24 VDC

(Range of operating voltage: 18=32 VDC)

Current on leds

Constant in the range of Operating Voltage

Overcurrent protection

>2A

Protection level

IP68

Materials available

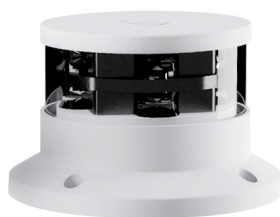
**Aluminum:** anodized ANTICORODAL 6082

**Steel:** passivated and polished stainless steel AISI 316L

Optical window

Transparent Borosilicate Glass

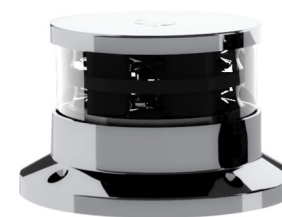
### ORDER CODE



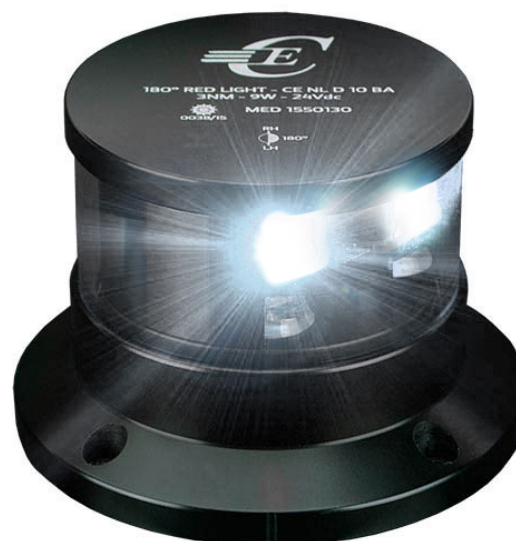
**ALUMINIUM GREY**  
code: CE NL D 03 GA



**ALUMINIUM BLACK**  
code: CE NL D 03 BA



**STAINLESS STEEL**  
code: CE NL D 03 SS



112,5°



## 180° WHITE LIGHT

FOR MOTOR YACHT AND SAILING VESSEL OVER 50mt

VISIBILITY [NM]: >3

POWER [W]: 9

Possibility to be combined

Accessories on page 52

### TECHNICAL FEATURES

Dimensions

Ø: 110mm | h: 75mm

Operating voltage

24 VDC

(Range of operating voltage: 18÷32 VDC)

Current on leds

Constant in the range of Operating Voltage

Overcurrent protection

>2A

Protection level

IP68

Materials available

**Aluminum:** anodized ANTICORODAL 6082

**Steel:** passivated and polished stainless steel AISI 316L

Optical window

Transparent Borosilicate Glass

### ORDER CODE



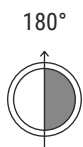
**ALUMINIUM GREY**  
code: CE NL D 13 GA



**ALUMINIUM BLACK**  
code: CE NL D 13 BA



**STAINLESS STEEL**  
code: CE NL D 13 SS



## 180° RED LIGHT

FOR MOTOR YACHT AND SAILING VESSEL OVER 50mt

VISIBILITY [NM]: >3

POWER [W]: 9

Possibility to be combined

Accessories on page 52

### TECHNICAL FEATURES

Dimensions

Ø: 110mm | h: 75mm

Operating voltage

24 VDC

(Range of operating voltage: 18-32 VDC)

Current on leds

Constant in the range of Operating Voltage

Overcurrent protection

>2A

Protection level

IP68

Materials available

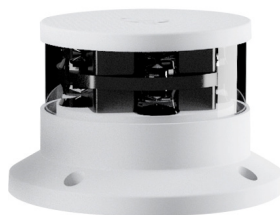
**Aluminum:** anodized ANTICORODAL 6082

**Steel:** passivated and polished stainless steel AISI 316L

Optical window

Transparent Borosilicate Glass

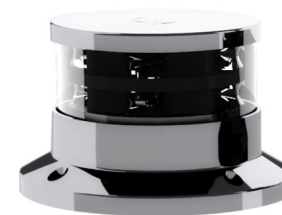
### ORDER CODE



**ALUMINIUM GREY**  
code: CE NL D 10 GA



**ALUMINIUM BLACK**  
code: CE NL D 10 BA

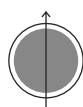


**STAINLESS STEEL**  
code: CE NL D 10 SS

## DATA SHEET DOUBLE LIGHTS



360°



### 360° GREEN LIGHT

FOR MOTOR YACHT AND SAILING VESSEL OVER 50mt

VISIBILITY [NM]: >2

POWER [W]: 13

Possibility to be combined

Accessories on page 52

#### TECHNICAL FEATURES

Dimensions

Ø: 110mm | h: 75mm

Operating voltage

24 VDC

(Range of operating voltage: 18÷32 VDC)

Current on leds

Constant in the range of Operating Voltage

Overcurrent protection

>2A

Protection level

IP68

Materials available

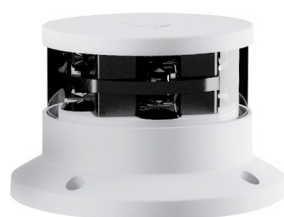
**Aluminum:** anodized ANTICORODAL 6082

**Steel:** passivated and polished stainless steel AISI 316L

Optical window

Transparent Borosilicate Glass

#### ORDER CODE



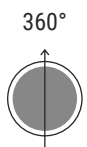
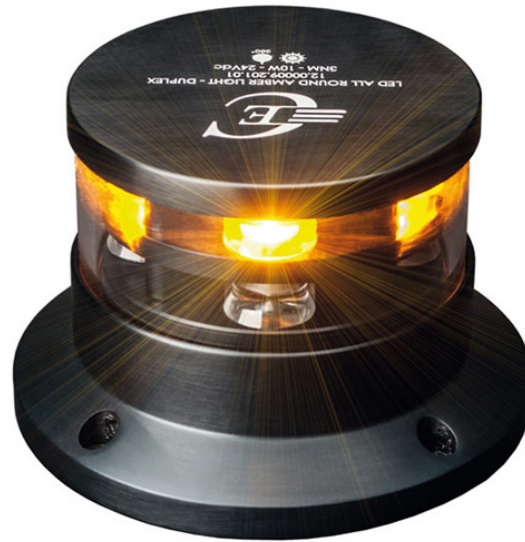
**ALUMINIUM GREY**  
code: CE NL D 08 GA



**ALUMINIUM BLACK**  
code: CE NL D 08 BA



**STAINLESS STEEL**  
code: CE NL D 08 SS



## 360° AMBER LIGHT

FOR MOTOR YACHT AND SAILING VESSEL OVER 50mt

VISIBILITY [NM]: >2

POWER [W]: 10

Possibility to be combined

Accessories on page 52

### TECHNICAL FEATURES

Dimensions

Ø: 110mm | h: 75mm

Operating voltage

24 VDC

(Range of operating voltage: 18=32 VDC)

Current on leds

Constant in the range of Operating Voltage

Overcurrent protection

>2A

Protection level

IP68

Materials available

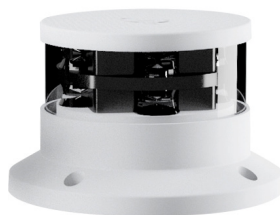
**Aluminum:** anodized ANTICORODAL 6082

**Steel:** passivated and polished stainless steel AISI 316L

Optical window

Transparent Borosilicate Glass

### ORDER CODE



**ALUMINIUM GREY**  
code: CE NL D 09 GA



**ALUMINIUM BLACK**  
code: CE NL D 09 BA



**STAINLESS STEEL**  
code: CE NL D 09 SS

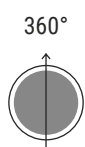




# SINGLE LIGHTS

## DATA SHEET

|                      |    |
|----------------------|----|
| 360° GREEN LIGHT     | 42 |
| 360° RED LIGHT       | 43 |
| TOWING LIGHT         | 44 |
| STERN LIGHT WHITE    | 45 |
| MASTHEAD LIGHT (5NM) | 46 |
| STARBOARD LIGHT      | 47 |
| PORT LIGHT           | 48 |
| 180° RED LIGHT       | 49 |
| ANCHOR LIGHT         | 50 |
| 360° AMBER LIGHT     | 51 |



## 360° GREEN LIGHT

FOR MOTOR YACHT AND SAILING VESSEL UP TO 50mt

VISIBILITY [NM]: >2

POWER [W]: 13

Possibility to be combined

Accessories on page 52

### TECHNICAL FEATURES

Dimensions

Ø: 110mm | h: 75mm

Operating voltage

24 VDC

(Range of operating voltage: 18÷32 VDC)

Current on leds

Constant in the range of Operating Voltage

Overcurrent protection

>2A

Protection level

IP68

Materials available

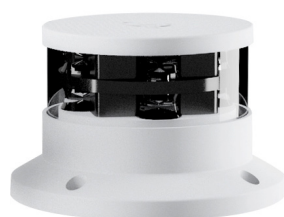
**Aluminum:** anodized ANTICORODAL 6082

**Steel:** passivated and polished stainless steel AISI 316L

Optical window

Transparent Borosilicate Glass

### ORDER CODE



**ALUMINIUM GREY**  
code: CE NL S 08 GA

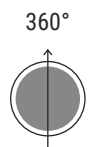
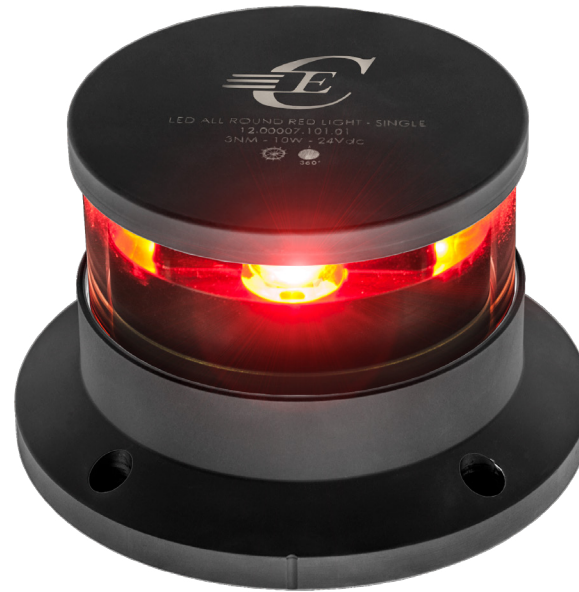


**ALUMINIUM BLACK**  
code: CE NL S 08 BA



**STAINLESS STEEL**  
code: CE NL S 08 SS





## 360° RED LIGHT

FOR MOTOR YACHT AND SAILING VESSEL UP TO 50mt

VISIBILITY [NM]: >3

POWER [W]: 11

Possibility to be combined

Accessories on page 52

### TECHNICAL FEATURES

|                        |   |
|------------------------|---|
| Dimensions             | Ø: 110mm   h: 75mm  |
| Operating voltage      | 24 VDC<br>(Range of operating voltage: 18=32 VDC)   |
| Current on leds        | Constant in the range of Operating Voltage  |
| Overcurrent protection | >2A   |
| Protection level       | IP68  |
| Materials available    | <b>Aluminum:</b> anodized ANTICORODAL 6082<br><b>Steel:</b> passivated and polished stainless steel AISI 316L |
| Optical window         | Transparent Borosilicate Glass  |

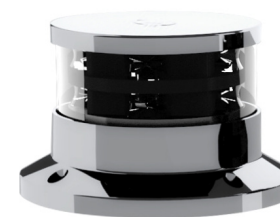
### ORDER CODE



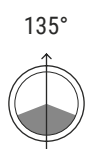
**ALUMINIUM GREY**  
code: CE NL S 07 GA



**ALUMINIUM BLACK**  
code: CE NL S 07 BA



**STAINLESS STEEL**  
code: CE NL S 07 SS



## TOWING LIGHT

FOR MOTOR YACHT AND SAILING VESSEL UP TO 50mt

VISIBILITY [NM]: >3

POWER [W]: 6.5

Possibility to be combined

Accessories on page 52

### TECHNICAL FEATURES

Dimensions

Ø: 110mm | h: 75mm

Operating voltage

24 VDC

(Range of operating voltage: 18÷32 VDC)

Current on leds

Constant in the range of Operating Voltage

Overcurrent protection

>2A

Protection level

IP68

Materials available

**Aluminum:** anodized ANTICORODAL 6082

**Steel:** passivated and polished stainless steel AISI 316L

Optical window

Transparent Borosilicate Glass

### ORDER CODE



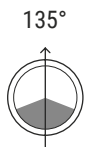
**ALUMINIUM GREY**  
code: CE NL S 02 GA



**ALUMINIUM BLACK**  
code: CE NL S 02 BA



**STAINLESS STEEL**  
code: CE NL S 02 SS



## STERN LIGHT WHITE

FOR MOTOR YACHT AND SAILING VESSEL UP TO 50mt

VISIBILITY [NM]: >3

POWER [W]: 5.5

Possibility to be combined

Accessories on page 52

### TECHNICAL FEATURES

|                        |   |
|------------------------|---|
| Dimensions             | Ø: 110mm   h: 75mm  |
| Operating voltage      | 24 VDC<br>(Range of operating voltage: 18=32 VDC)   |
| Current on leds        | Constant in the range of Operating Voltage  |
| Overcurrent protection | >2A   |
| Protection level       | IP68  |
| Materials available    | <b>Aluminum:</b> anodized ANTICORODAL 6082<br><b>Steel:</b> passivated and polished stainless steel AISI 316L |
| Optical window         | Transparent Borosilicate Glass  |

### ORDER CODE



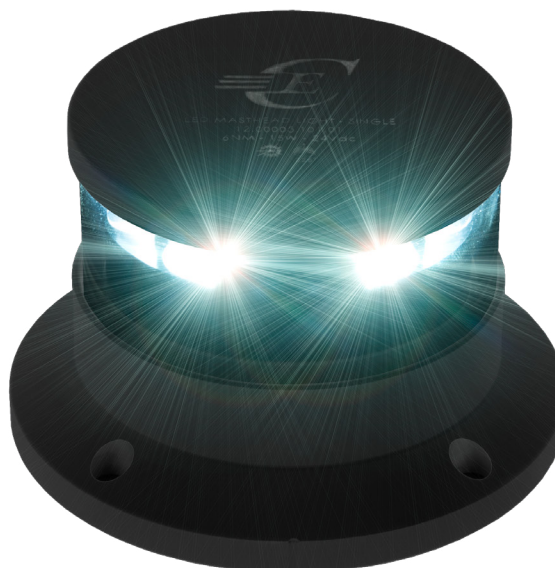
**ALUMINIUM GREY**  
code: CE NL S 01 GA



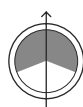
**ALUMINIUM BLACK**  
code: CE NL S 01 BA



**STAINLESS STEEL**  
code: CE NL S 01 SS



225°



## MASTHEAD LIGHT (5NM)

FOR MOTOR YACHT AND SAILING VESSEL UP TO 50mt

VISIBILITY [NM]: >5

POWER [W]: 15

Possibility to be combined

Accessories on page 52

### TECHNICAL FEATURES

Dimensions

Ø: 110mm | h: 75mm

Operating voltage

24 VDC

(Range of operating voltage: 18÷32 VDC)

Current on leds

Constant in the range of Operating Voltage

Overcurrent protection

>2A

Protection level

IP68

Materials available

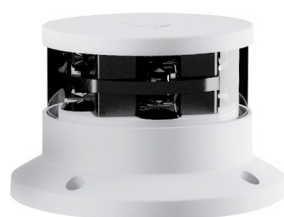
**Aluminum:** anodized ANTICORODAL 6082

**Steel:** passivated and polished stainless steel AISI 316L

Optical window

Transparent Borosilicate Glass

### ORDER CODE



**ALUMINIUM GREY**  
code: CE NL S 05 GA



**ALUMINIUM BLACK**  
code: CE NL S 05 BA



**STAINLESS STEEL**  
code: CE NL S 05 SS



112,5°



## STARBOARD LIGHT

FOR MOTOR YACHT AND SAILING VESSEL UP TO 50mt

VISIBILITY [NM]: >3

POWER [W]: 8

Possibility to be combined

Accessories on page 52

### TECHNICAL FEATURES

Dimensions

Ø: 110mm | h: 75mm

Operating voltage

24 VDC

(Range of operating voltage: 18=32 VDC)

Current on leds

Constant in the range of Operating Voltage

Overcurrent protection

>2A

Protection level

IP68

Materials available

**Aluminum:** anodized ANTICORODAL 6082

**Steel:** passivated and polished stainless steel AISI 316L

Optical window

Transparent Borosilicate Glass

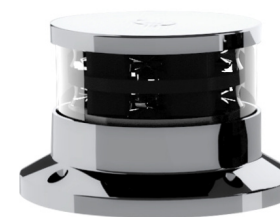
### ORDER CODE



**ALUMINIUM GREY**  
code: CE NL S 03 GA



**ALUMINIUM BLACK**  
code: CE NL S 03 BA

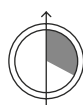


**STAINLESS STEEL**  
code: CE NL S 03 SS

## DATA SHEET SINGLE LIGHTS



112,5°



## PORT LIGHT

FOR MOTOR YACHT AND SAILING VESSEL UP TO 50mt

VISIBILITY [NM]: >3

POWER [W]: 8

Possibility to be combined

Accessories on page 52

### TECHNICAL FEATURES

Dimensions

Ø: 110mm | h: 75mm

Operating voltage

24 VDC

(Range of operating voltage: 18÷32 VDC)

Current on leds

Constant in the range of Operating Voltage

Overcurrent protection

>2A

Protection level

IP68

Materials available

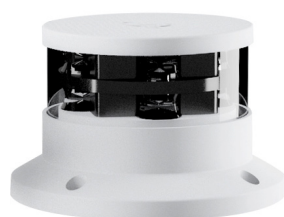
**Aluminum:** anodized ANTICORODAL 6082

**Steel:** passivated and polished stainless steel AISI 316L

Optical window

Transparent Borosilicate Glass

### ORDER CODE



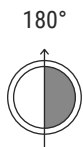
**ALUMINIUM GREY**  
code: CE NL S 04 GA



**ALUMINIUM BLACK**  
code: CE NL S 04 BA



**STAINLESS STEEL**  
code: CE NL S 04 SS



## 180° RED LIGHT

FOR MOTOR YACHT AND SAILING VESSEL UP TO 50mt

VISIBILITY [NM]: >3

POWER [W]: 9

Possibility to be combined

Accessories on page 52

### TECHNICAL FEATURES

Dimensions

Ø: 110mm | h: 75mm

Operating voltage

24 VDC

(Range of operating voltage: 18-32 VDC)

Current on leds

Constant in the range of Operating Voltage

Overcurrent protection

>2A

Protection level

IP68

Materials available

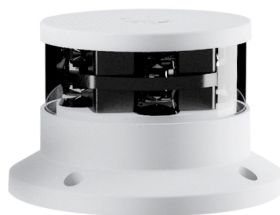
**Aluminum:** anodized ANTICORODAL 6082

**Steel:** passivated and polished stainless steel AISI 316L

Optical window

Transparent Borosilicate Glass

### ORDER CODE



**ALUMINIUM GREY**  
code: CE NL S 10 GA

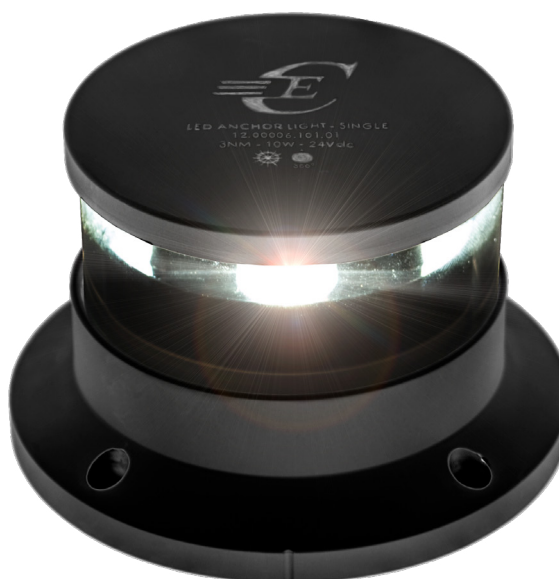


**ALUMINIUM BLACK**  
code: CE NL S 10 BA

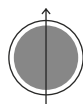


**STAINLESS STEEL**  
code: CE NL S 10 SS

## DATA SHEET SINGLE LIGHTS



360°



## ANCHOR LIGHT

FOR MOTOR YACHT AND SAILING VESSEL UP TO 50mt

VISIBILITY [NM]: >3

POWER [W]: 6.5

Possibility to be combined

Accessories on page 52

### TECHNICAL FEATURES

Dimensions

Ø: 110mm | h: 75mm

Operating voltage

24 VDC

(Range of operating voltage: 18÷32 VDC)

Current on leds

Constant in the range of Operating Voltage

Overcurrent protection

>2A

Protection level

IP68

Materials available

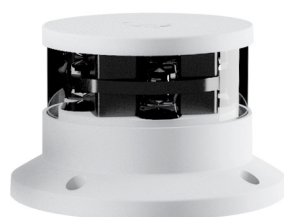
**Aluminum:** anodized ANTICORODAL 6082

**Steel:** passivated and polished stainless steel AISI 316L

Optical window

Transparent Borosilicate Glass

### ORDER CODE



**ALUMINIUM GREY**  
code: CE NL S 06 GA



**ALUMINIUM BLACK**  
code: CE NL S 06 BA



**STAINLESS STEEL**  
code: CE NL S 06 SS





## 360° AMBER LIGHT

FOR MOTOR YACHT AND SAILING VESSEL UP TO 50mt

VISIBILITY [NM]: >2

POWER [W]: 10

Possibility to be combined

Accessories on page 52

### TECHNICAL FEATURES

|                        |   |
|------------------------|---|
| Dimensions             | Ø: 110mm   h: 75mm  |
| Operating voltage      | 24 VDC<br>(Range of operating voltage: 18=32 VDC)   |
| Current on leds        | Constant in the range of Operating Voltage  |
| Overcurrent protection | >2A   |
| Protection level       | IP68  |
| Materials available    | <b>Aluminum:</b> anodized ANTICORODAL 6082<br><b>Steel:</b> passivated and polished stainless steel AISI 316L |
| Optical window         | Transparent Borosilicate Glass  |

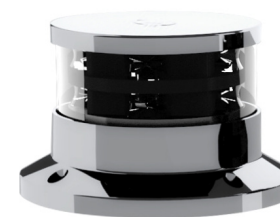
### ORDER CODE



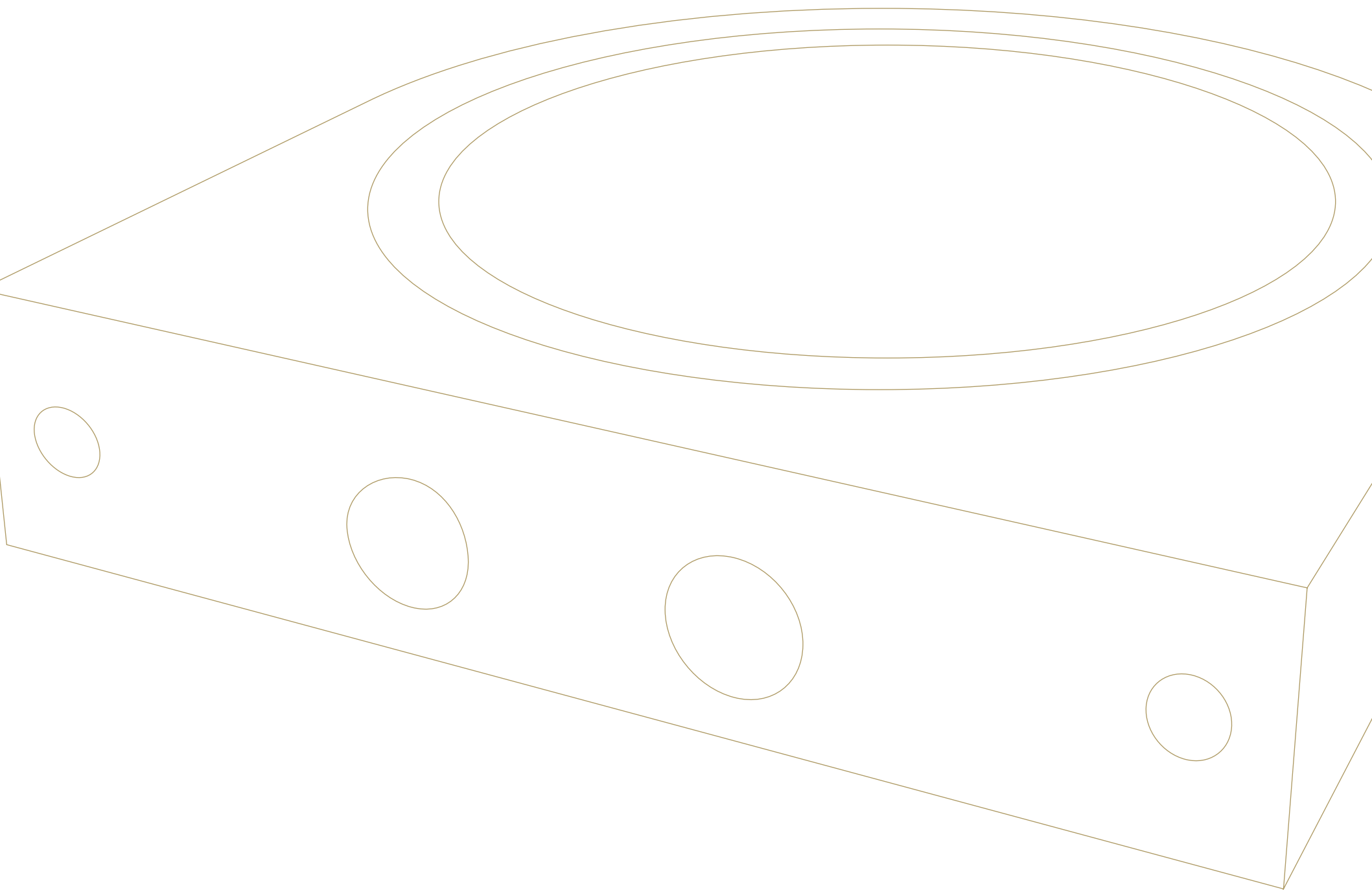
**ALUMINIUM GREY**  
code: CE NL S 09 GA

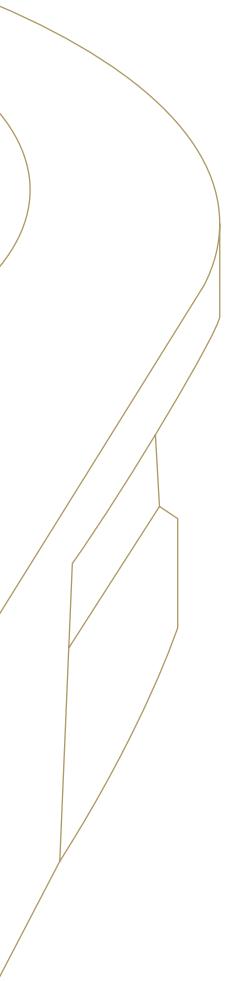


**ALUMINIUM BLACK**  
code: CE NL S 09 BA



**STAINLESS STEEL**  
code: CE NL S 09 SS





# ACCESSORIES

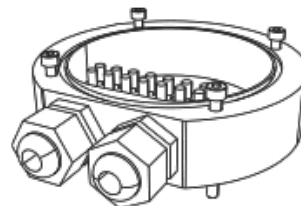
DATA SHEET

## ACCESSORIES

### DECK BRACKET

|           |             |
|-----------|-------------|
| WHITE ALU | CE NL DB GA |
| BLACK ALU | CE NL DB BA |
| S.STEEL   | CE NL DB SS |

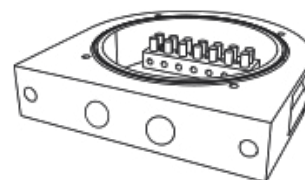
Dimensions (mm): 110



### SIDE BRACKET

|           |             |
|-----------|-------------|
| WHITE ALU | CE NL SB GA |
| BLACK ALU | CE NL SB BA |
| S.STEEL   | CE NL SB SS |

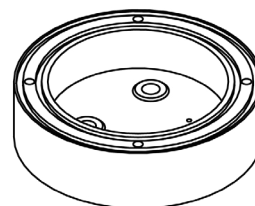
Dimensions (mm): 110



### ROUND BRACKET

|           |                |
|-----------|----------------|
| WHITE ALU | CE NL DB 2G GA |
| BLACK ALU | CE NL DB 2G BA |
| S.STEEL   | CE NL DB 2G SS |

Dimensions (mm): 110



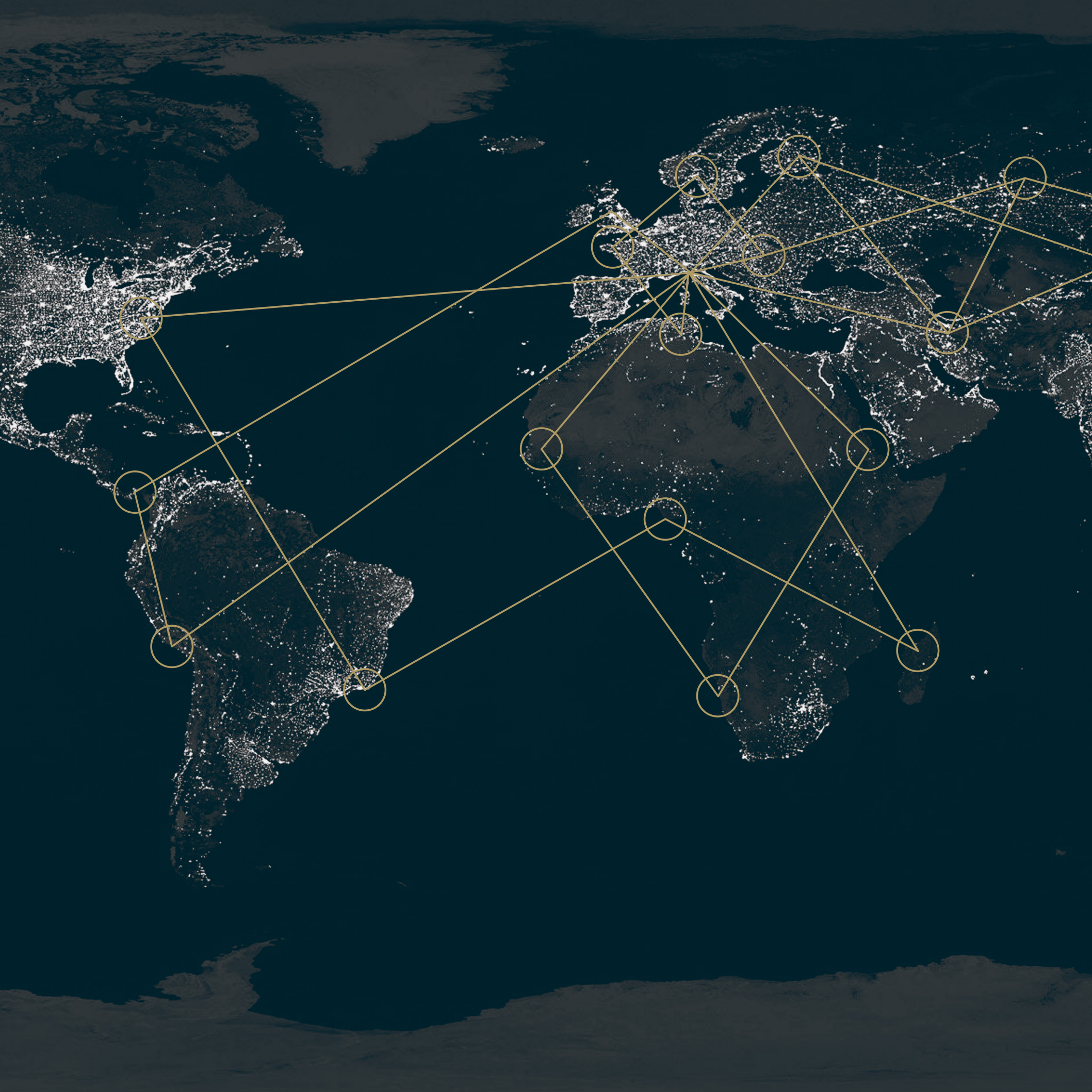


# CUSTOMER SERVICE

The company provides customer **support during project planning and installation.**

We have a **helpline to find and solve problems** in case of malfunction.

**Worldwide customer support on board** with qualified staff.

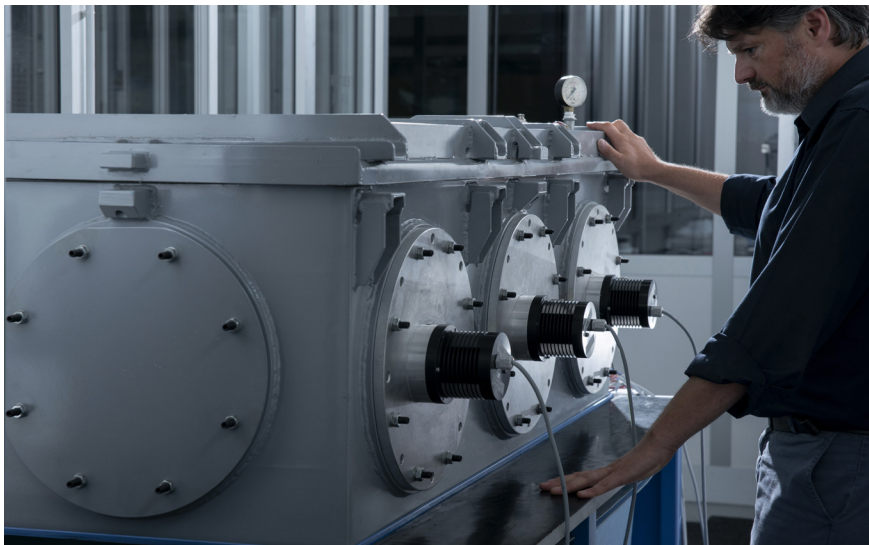








Innovation is a fundamental part of our mission. Tradition on the one hand, innovation in the future on the other. Thanks to the synergy with the companies of the Cantalupi Group, our products boast 70 years of experience in marine electrical automation systems and 25 years of R&D in LED lighting technology.



A SPECIAL THANKS TO  
**OUR PARTNERS**

|                       |                       |
|-----------------------|-----------------------|
| AK YACHT              | HUISMAN ETECH EXPERTS |
| ALEWIJNSE             | IBC SHIPYARD          |
| ALYA YACHTS           | LOGICA YACHTS         |
| AMICO & CO            | MEGII YAY             |
| ARCADIA               | OCEANCO               |
| ASTINAVE              | OPTIMA DESIGN         |
| AZIMUT - BENETTI      | PALUMBO               |
| BAGLIETTO             | PERINI                |
| CANTIERE DELLE MARCHE | PICCHIOTTI            |
| CCN                   | RIVA                  |
| CRN                   | ROSSINAVI             |
| DAMEN                 | S.I.M.A.N.            |
| DE KEIZER MERINE ENG. | SANLORENZO            |
| DYNAMIQ               | SEVEN STAR            |
| EEKELES               | SIRENA MARINE         |
| FEADSHIP              | SOUTHER WIND          |
| FINCANTIERI           | TANKOA                |
| FIPA - MAIORA         | TIJSSSEN ELEKTRO      |
| GB YACHT              | TURQUOISE             |
| GOLDEN A/S            | VENTURE YACHT         |
| HAKVOORT SHIPYARD     | VIAREGGIO SUPERYACHT  |
| HEESEN                | WESTPORT              |
| HORIZON               | YILDIZ                |

Other shipyards and designers on ongoing projects  
will be added.

**Cantalupi**<sup>®</sup>  
GROUP

**Cantalupi**<sup>®</sup>  
ELECTRIC SYSTEMS

1951



**ELECTRIC SYSTEMS**

DESIGN AND PRODUCTION  
ELECTRICAL PANELS AND CONTROL UNITS  
AUTOMATION SYSTEMS  
ELECTRIC SYSTEMS  
CONSULTING  
SERVICE  
REFIT  
NAVAL STORE

**Cantalupi**<sup>®</sup>  
LIGHT ENGINEERING

**2001**



**4C**<sup>®</sup>  
INNOVATION

**2015**



**SERVICES**

LIGHTING ENGINEERING  
LIGHTING DESIGN ASSISTANCE  
RESEARCH & DEVELOPMENT  
LIGHTING ACADEMY  
PRODUCTION  
CUSTOM PRODUCT DESIGN  
CUSTOM PRODUCTION  
CUSTOM PRODUCT PROTOTYPING  
CUSTOM PROTOTYPE PREASSEMBLY  
PHOTOMETRIC TEST  
IP TEST  
TEMPERATURE TEST  
ASSEMBLY  
QUALITY CONTROL  
QUALITY ASSURANCE  
LOGISTICS  
CUSTOMER CARE

**COLLECTIONS**

TABLE LAMPS  
WALL LIGHTS  
OTTO COLLECTION  
COURTESY LIGHTS  
READING LIGHTS  
LINEAR LIGHTS  
DOWNLIGHTS

**BESPOKE DEPT.**

LIMITED EDITION  
BACK LIGHTING  
TABLE LAMPS CHANDELIER  
WALL LIGHTS

**TECHNICAL MARINE PRODUCTS**

TECHNICAL DESIGN  
RESEARCH & DEVELOPMENT  
LIGHTING STUDIO  
ELECTRONICS  
PRODUCTION  
ASSEMBLY  
LOGISTICS  
CUSTOMER CARE  
IP TEST  
LIGHTING TEST  
3D TECHNICAL STUDIO  
IP 68  
INSTALLATION

**COLLECTIONS**

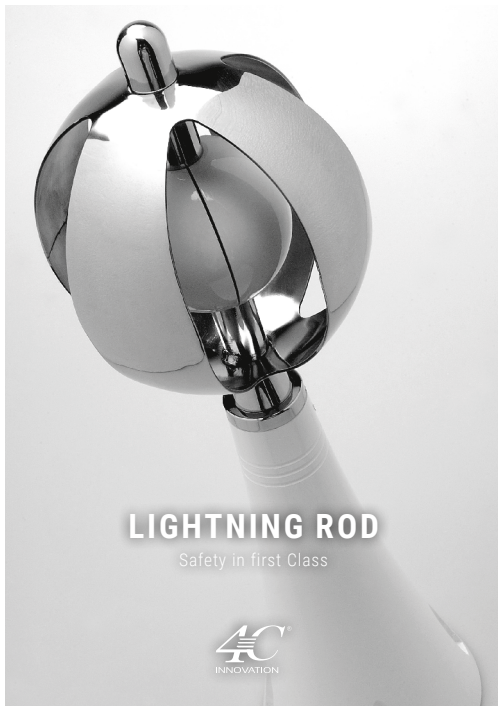
NAVIGATION LED LIGHT  
SEA LED  
SEA CABLE REEL  
NAME LED LIGHT

# COLLECTION

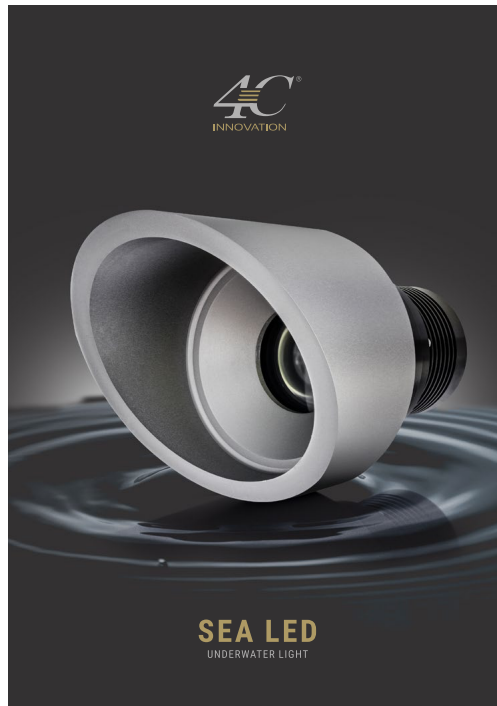


4C Innovation designs and manufactures LED backlit yacht names in Italy.

There are several techniques available to make the wishes of our customers come true. Discover all our services and products.



The 4C Innovation Lightning Protection System was designed to protect the boat. It integrates perfectly with the design of yachts thanks to the use of materials suitable for the nautical world.



The new line of underwater lights from 4C Innovation was designed to achieve first class lighting performance and greater flexibility in terms of available lighting settings. It allows an easier installation and maintenance, thus extending the life of the product.



The Sea Cable Reel is a machine that unwinds and coils the shore power cable.

Thanks to this system you will be able to store the cable in a safe, simple and tidy way, so you don't have cables lying around on board. It also guarantees a longer life of the cable.







**OPERATING  
INTERNATIONALLY AS A  
PROFESSIONAL REFERENCE  
FOR SHIPYARDS**



Via Di Montramito, 1722  
55054 Massarosa (LU) Italy

p.iva 02400360463  
info@4cinnovation.it

[www.4cinnovation.it](http://www.4cinnovation.it)

[www.4cinnovation.it](http://www.4cinnovation.it)

COMPANY OF  
*Cantalupi*<sup>®</sup>  
GROUP